



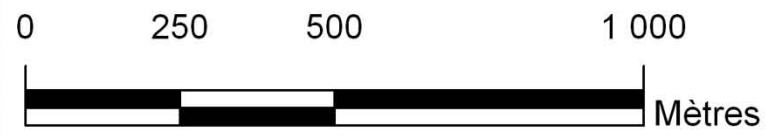


Proposition GOB, LPO, Bretagne vivante, Kite surf-29
pour la pratique du kite surf et la conservation des
oiseaux dans la baie du Kernic :

-  Zone de Kite-surf, aile de traction
-  Zone école de kite-surf
-  ZSC Natura 2000 Habitat, Faune, Flore
-  ZPS Natura 2000 Oiseaux

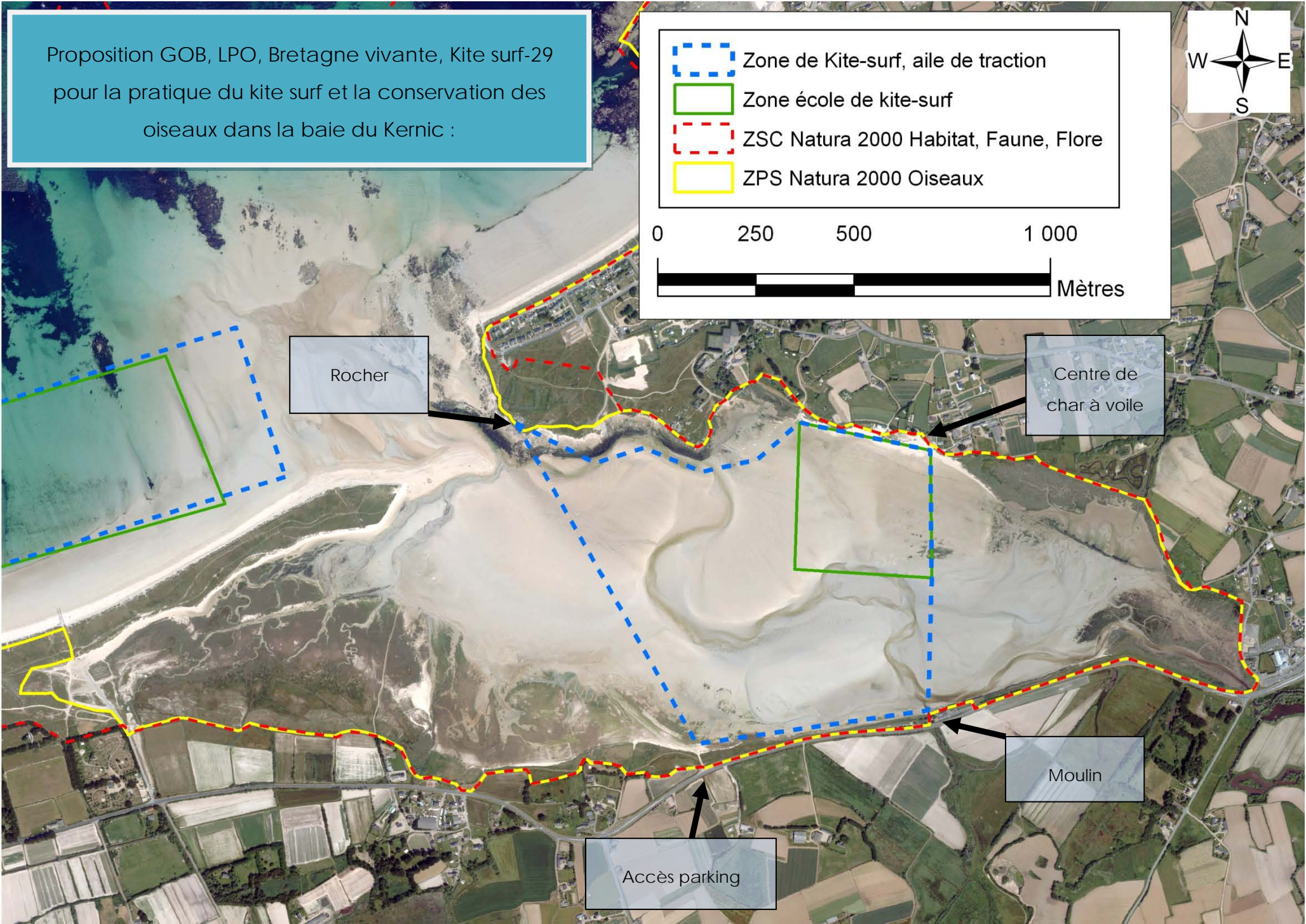


Rocher

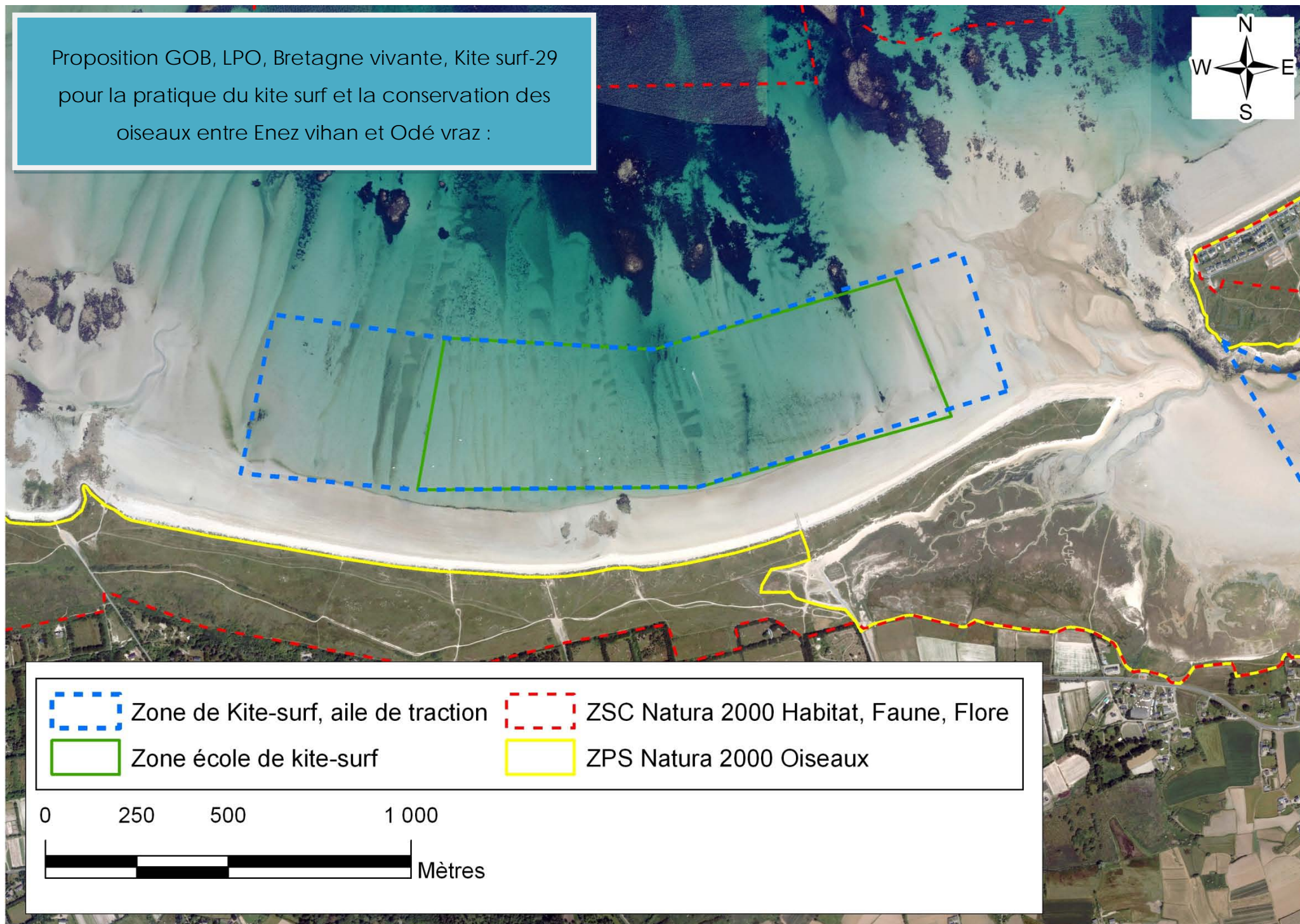
Centre de
char à voile

Moulin

Accès parking



Proposition GOB, LPO, Bretagne vivante, Kite surf-29
pour la pratique du kite surf et la conservation des
oiseaux entre Enez vihan et Odé vraz :



 Zone de Kite-surf, aile de traction

 ZSC Natura 2000 Habitat, Faune, Flore

 Zone école de kite-surf

 ZPS Natura 2000 Oiseaux

0 250 500 1 000

 Mètres

